

Meeting:	Safer Bromley Partnership Strategic Group
Date:	29th September 2011
Subject:	Performance Management Report
Author:	Pratheepan Jeyapragasam, Crime Analyst pratheepan.jeyapragasam@bromley.gov.uk

1 SUMMARY

- 1.1 This report provides an update in relation to the targets for the Safer Bromley Partnership agreed in July 2011. The report provides the latest performance monitoring data to 30 June 2011 (Quarter 1)
- .

2 RECOMMENDATION

- 2.1 The Strategic Group is asked to

- Note the performance information contained within the report.

3 BACKGROUND INFORMATION

- 3.3 In light of changes, it was proposed that a new performance monitoring regime was required in order to assess the impact of the Partnership in its objective of making Bromley a Safer place. At the previous meeting of the Partnership, the following Control Strategy Priorities were agreed:

- Crimes against Property
- Violence against Person
- Anti-Social Behaviour
- Public Confidence

- 3.5 These priorities are reflected in the performance framework established by the Metropolitan Police and, as such, it was proposed that these four indicators form the basis of the future performance management regime for the Safer Bromley Partnership. In relation to the first two priorities, it was proposed that targets be set against the indicators of reducing Violent Crime and reducing Property Crime. A summary of the “portfolio” of offences and Anti Social Behaviour that are included within these overarching targets are provided at Appendix 1. As

agreed in the last meeting, only the following four targets would be reported on at each meeting of the Strategic Group:

- Performance Indicator 1* Reduction in number of violent crimes within Bromley
- Performance Indicator 2* Reduction in number of property crimes within Bromley
- Performance Indicator 3* Reduction in levels of recorded Anti Social Behaviour
- Performance Indicator 4* Increased confidence in the fact that Bromley is a safe place

Reporting on individual crime types and detail of individual operations would only be made as a routine if achievement against set targets was not being made or, in some cases, where the measurable rates of individual offences or types of offending were significantly different from expected trends and predicted patterns etc. The management of these operational level issues would be dealt with outside of the Strategic Group at the combined Police/Partnership Tactical Tasking and Coordination Group chaired by the borough Superintendent.

Performance Review 2011/2012

- 3.6 Significant progress has been made in relation to reducing crime and disorder in Bromley. This is reflected not only in the previous year's performance figures but also over the previous five quarters and the following charts provide an indication of the trends in crime in Bromley over the past five Quarters (April 2010 – June 2011). Please note that statistics in relation to the recent disorders will be reported on the next quarter (July – September).

Figure 1 – Total Notifiable Offences

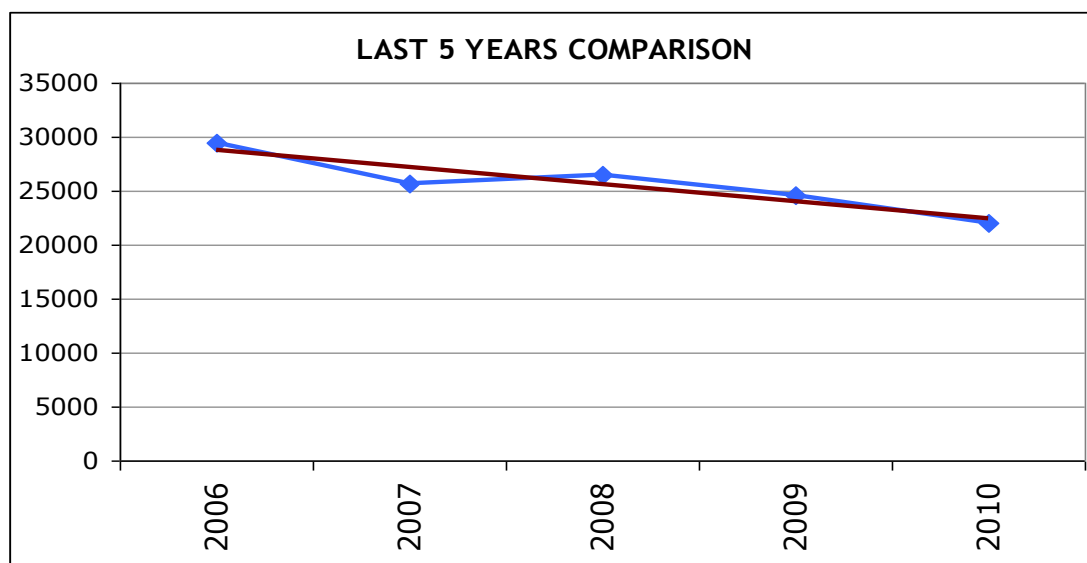
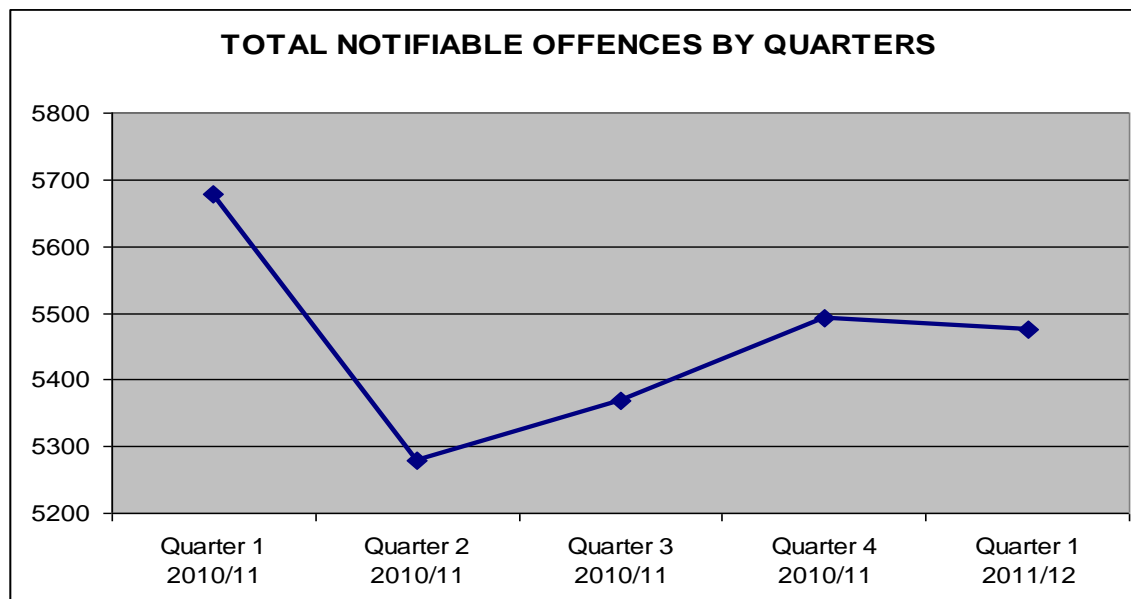


Figure 1.1 – Total Notifiable Offences

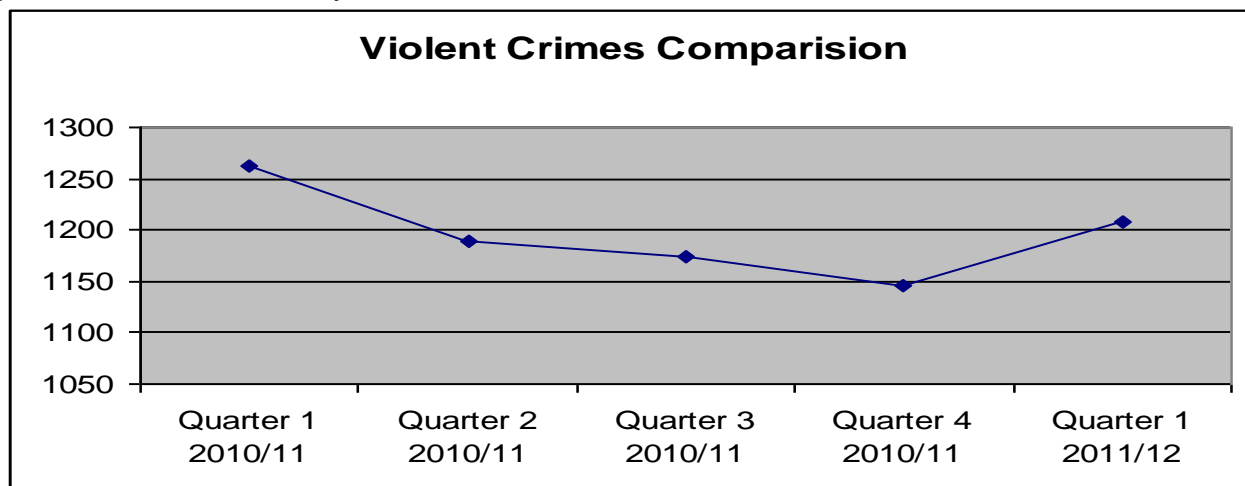


3.6 As can be seen from the figure 1.1 above, the trend over the five quarters in relation to the number of Total Notifiable Offences has shown an increase from Q2 to Q4 last year then slight decline in numbers in Q1 this year. During the April 2011 to June 2011 there were 5476 Total Notified Offences reported to the Police, this represented a reduction of 202 offences compared with the same period previous year.

3.7 Theft and Handling accounted for the highest proportion of offences reported to the police during the reporting period.

Performance Indicator 1- Reduction in numbers of Violent crimes within Bromley

3.8 Offences related to Violent Crimes represent 22% of the Total Notifiable offences in the period of Quarter 1 this year

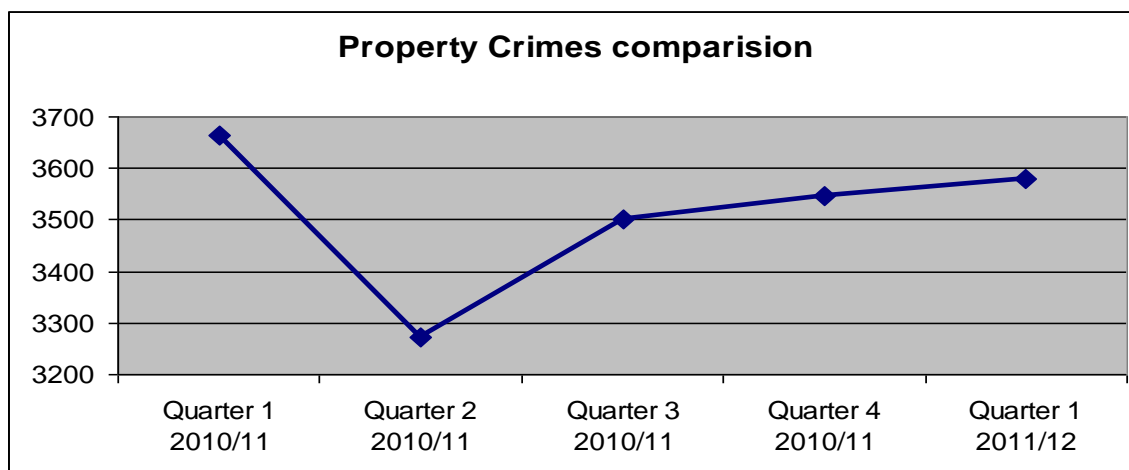


3.9 As can be seen from the figure above, the trend over the last five quarters in relation to the number of Total Violent Offences has been declined in Q1 to Q4 in numbers and then an increase notified in Q1 this year

3.10 During the April 2011 to June 2011 there were 1207 Total Violent Offences reported to the Police, this represented a reduction of 56 offences compared with the same period previous year.

Performance Indicator 2- Reduction in numbers of Property Crimes within Bromley

3.11 Total offences to property Crimes represent 65% of the Total Notifiable offences in the period of Quarter 1 this year

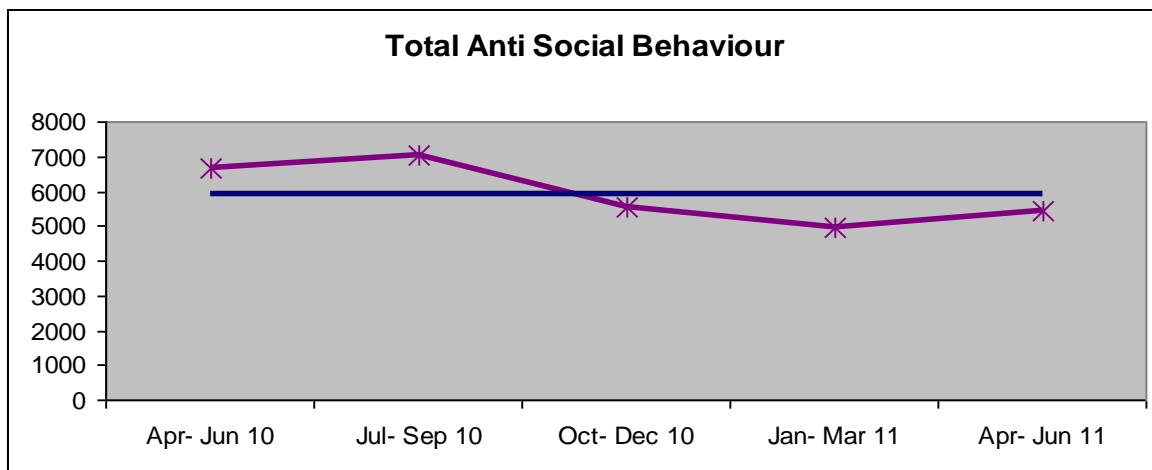


3.12 As can be seen from the figure above, the trend does indicate as marked a reduction over the period of Q1 to Q2. From Q3, it does still indicate an increasing level of offences relates to property crimes.

3.13 During the April 2011 to June 2011 there were 3579 Total Property related Offences reported to the Police, this represented a reduction of 85 offences compared with the same period previous year

Anti-Social Behaviour

As agreed in the last meeting, this is the first time Anti Social Behaviour has been reporting to this SBP Strategic Group. It is still open to members for discussion.

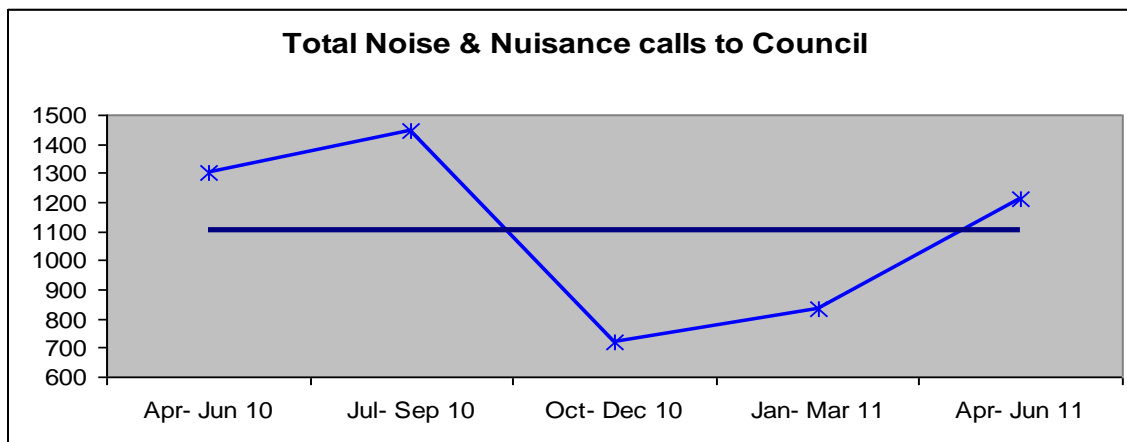


	Apr- Jun 10	Jul- Sep 10	Oct- Dec 10	Jan- Mar 11	Apr- Jun 11
Noise & Nuisance	1302	1444	721	836	1215
ASB to Council	90	153	80	115	181
Fly Tipping Investigation	148	146	149	143	145
ASB to Police	3529	3536	3185	2584	2965
Graffiti	1585	1746	1398	1269	945
Total ABS	6654	7025	5533	4947	5451

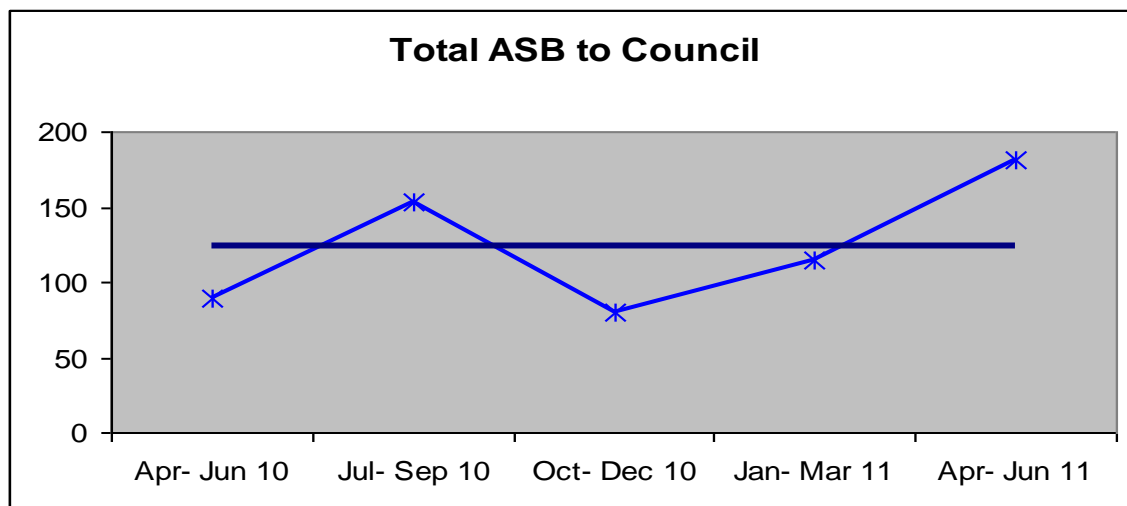
3.14 During the reporting period, the borough has experienced a reduction of 1203 (18%) incidents of ASB reported when compared with the same period last year.

3.15 During the reporting period, 0 Anti-Social Behaviour Orders (ASBOs) and 9 Anti-Social Behaviour Contracts (ABCs) were issued compared with 0 and 18 respectively the same period year before. Whilst no ASBOs have been issued many of the applications were dealt with by other interventions such as premises closures or diversion plans.

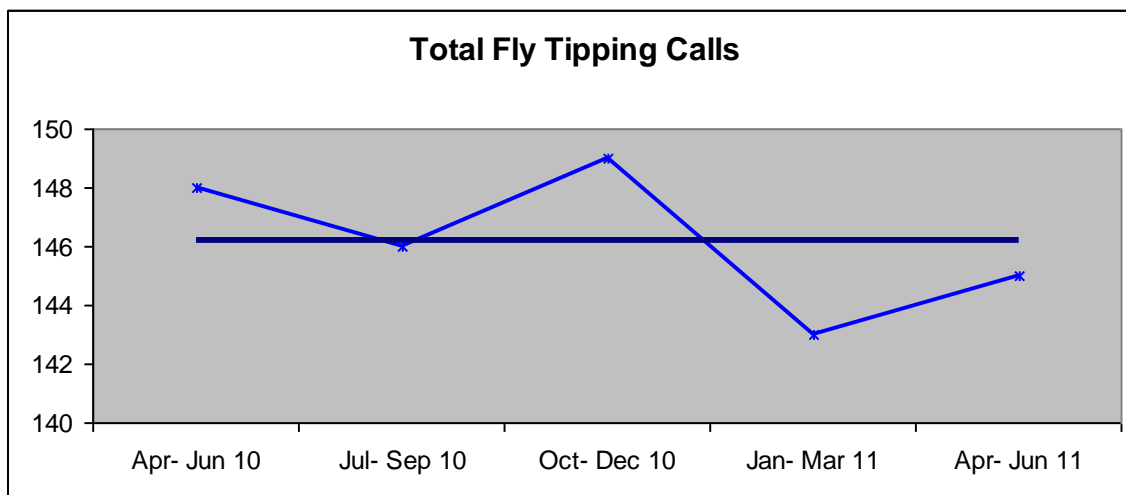
3.16 In average there were 5922 incidents reported/ investigated regarding Anti Social Behaviour in the last five quarters.



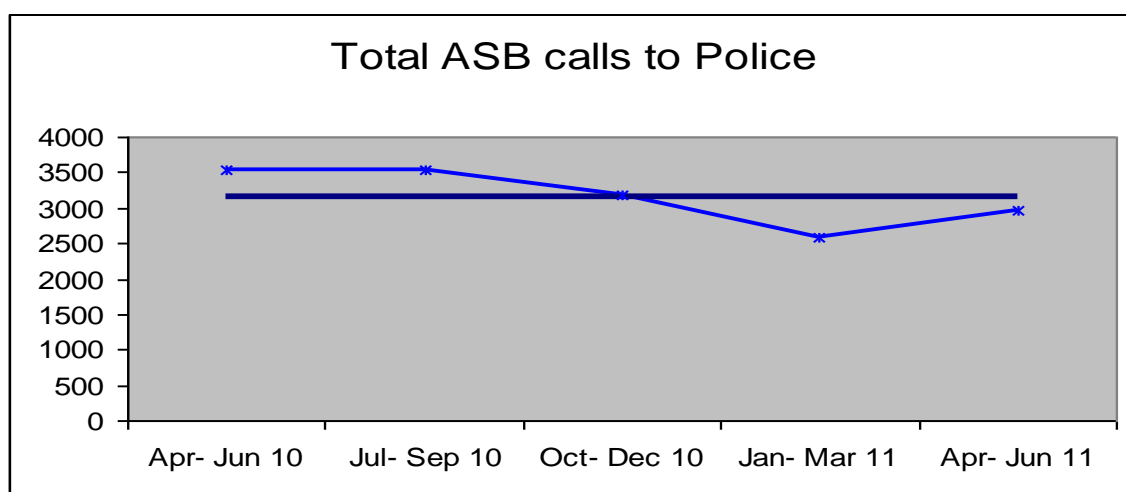
- 3.17 As can be seen from the figure above, during the reporting period, the borough has experienced a reduction of 87 incidents of Noise and Nuisance ASB reported when compared with the same period last year.



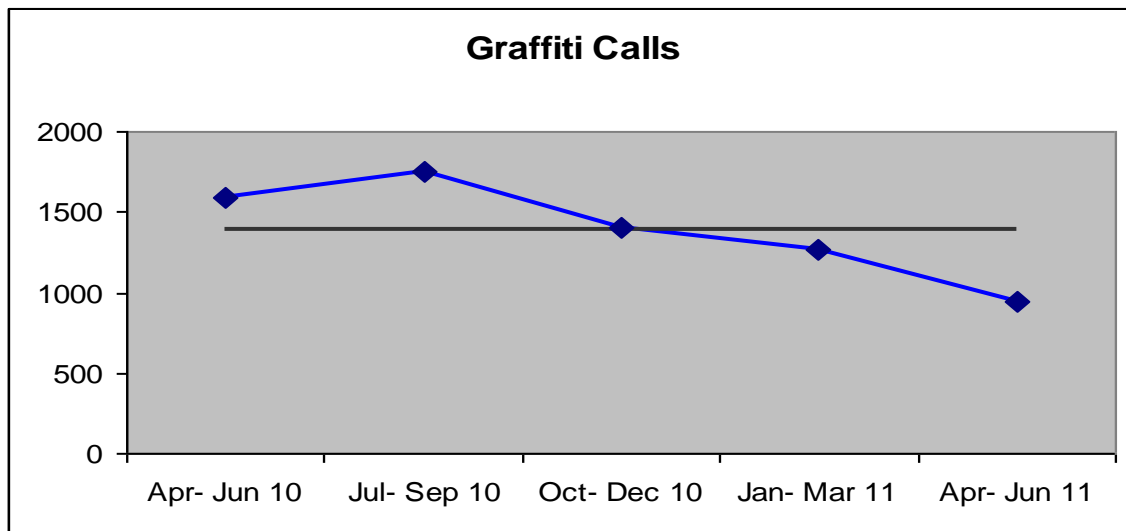
- 3.18 April to June 2010 the borough has experienced an increase of 91 incidents of ASB reported when compared with the same period last year. As have been introduced the Matrix reporting system for ASB at a higher level and targeting the most vulnerable. This is leading to an increase in referrals from Housing Associations, Police and Local Authority. In addition the Earn your travel back also lead to an increase. As the Matrix system is adopted by more agencies then there will be an increase in referrals. As the public become more aware of us they will report more.



3.19 As can be seen from the figure above, during the reporting period, the borough has experienced a reduction of 3 incidents of Fly Tipping ASB reported when compared with the same period last year.



3.20 This reporting period a reduction of 564 incidents reported to police regarding ASB compare with the same period last year.



3.21 As can be seen from the figure above, during the reporting period, the borough has experienced a reduction of 640 incidents of Graffiti ASB reported when compared with the same period last year. This could be for a number of reasons, increase community engagement, street friends taking a stronger role in the community, more PCSO on the street any of these could lead to less reports of graffiti being made.

APPENDIX 1

Performance Indicator Portfolios:

Violence Portfolio	
Offences	Supporting Measures
Violence with Injury	Domestic Violence
Common Assault	Domestic Violence Sanction Detection Rate
Harassment	Domestic Violence Arrest Rate
Threats/ Conspiracy to Kill	Serious Youth Violence
Blackmail	Knife Enabled Crime
Kidnapping/ False Imprisonment	Knife Enabled Crime Sanctioned Det. Rate
	Gun Crime
	Gun Crime Sanctioned Det. Rate
	Most Serious Violence
	Most Serious Violence Sanctioned Det. Rate

Property Portfolio
Offences:
Personal Robbery
Commercial Robbery
Total Robbery
Residential Burglary
Non-Residential Burglary
Theft/Taking Motor Vehicles
Theft From Motor Vehicles
Theft From Shops
Theft From Person
Theft of Pedal Cycles
Other Theft
Criminal Damage

Anti Social Behaviour Portfolio
ASB:
Noise & Nuisance
ASB to Council
Fly Tipping
ASB to Police
Graffiti